

5 OCTOBER 2017

Benefits for Society: Assessing & Reporting SESSION G



Hitomi Miura
Environmental
Management Group
SEKISUI Chemical Co., Ltd.



Construction
Andrea Peiffer &
Martin Haustermann
Global Nature Fund



Global
Nature
Fund

Environment-Contributing Products

A decorative horizontal line composed of three rows of small, light blue dots.

Benefits for Society: Assessing & Reporting

Hitomi Miura, SEKISUI Chemical Co., Ltd.

Introduction of SEKISUI

Name: SEKISUI Chemical Co., Ltd.
Headquarters: Tokyo / Osaka, Japan

Employees: 23,000
International sales ratio: 23,6%

Business:

Processing outstanding plastics for industrial applications

Residential and Social Infrastructure



Housing



Residential
Services



Piping



Construction and
Infrastructure



Automotive and
Transportation



Life Science



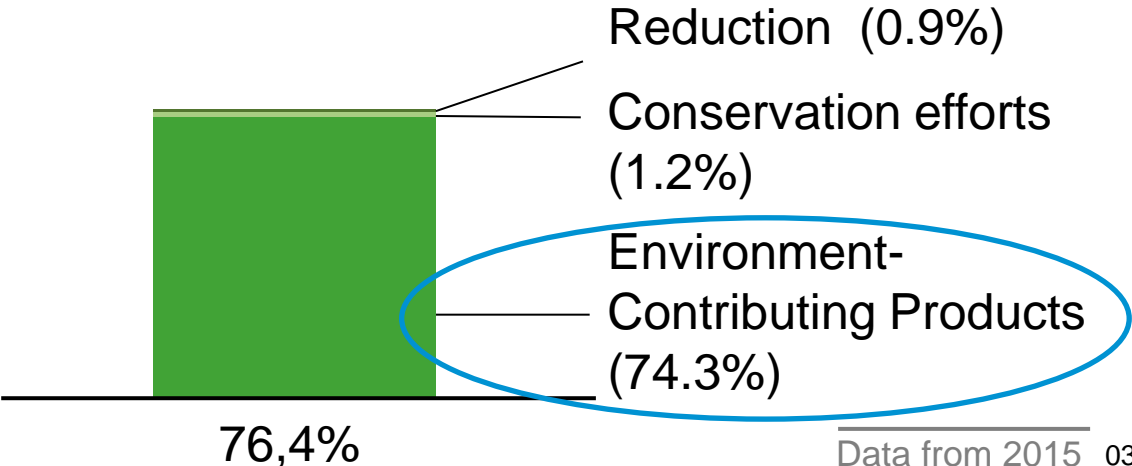
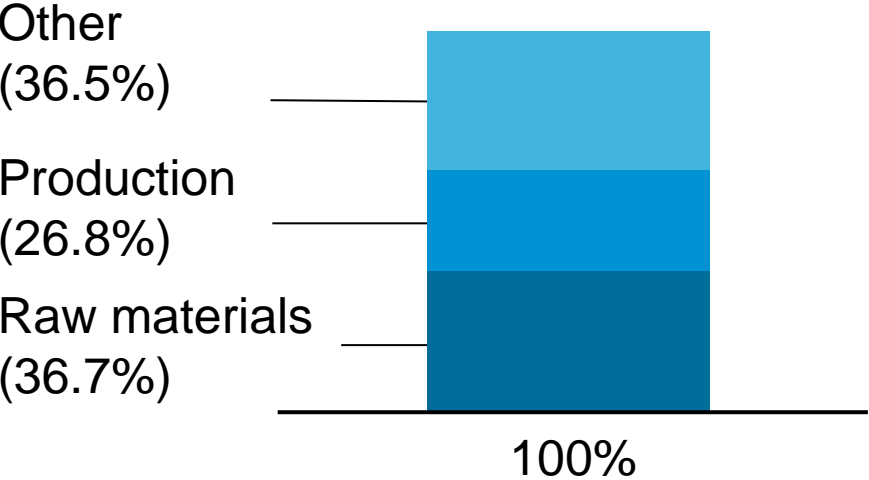
Electronics

Chemical Solution

The SEKISUI Index



2030 Environmental vision: 100% Contribution



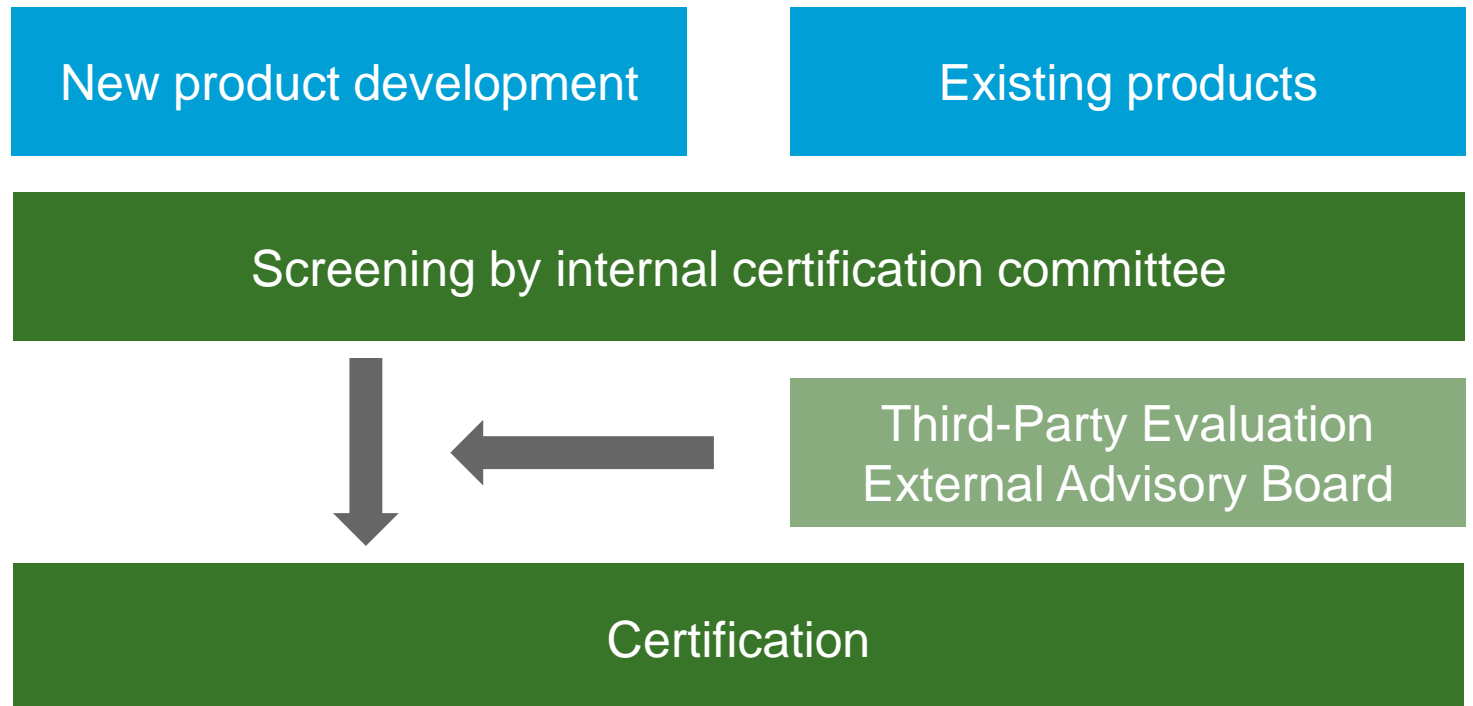
Environment-Contributing Product

What is an Environment-Contributing Product?



Environment-Contributing Products (ECP):

- All lifecycle stages
- Comparison with conventional product
- Around 50% of SEKISUI-products are certified as Environment-Contributing Products



A new frontier, a new lifestyle.



Sewage Pipe Renewal (SPR™)



Sewage Pipe Renewal (SPR™)

- Trenchless technology
- No traffic redirections needed
- Less space demand
- Sand or soil doesn't need to be excavated



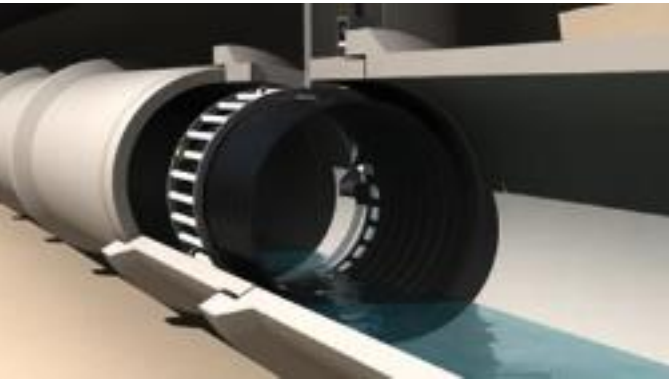
Sewage Pipe Renewal (SPR™)

Trenchless (SPR™)

Purchased materials: e.g. PVC

Production of liner

Small influence on traffic



Raw materials



Sand disposal

Open trench

Purchased materials; sand

Production of material

Transportation of material and sand

Traffic redirection



Materiality Analysis

	Supply / Materials	Production	Transport	Use / Maintenance	Disposal/ Recycling
GHG					
Waste					
Material					
Water					
Pollution					
Biodiversity					



Indistinct

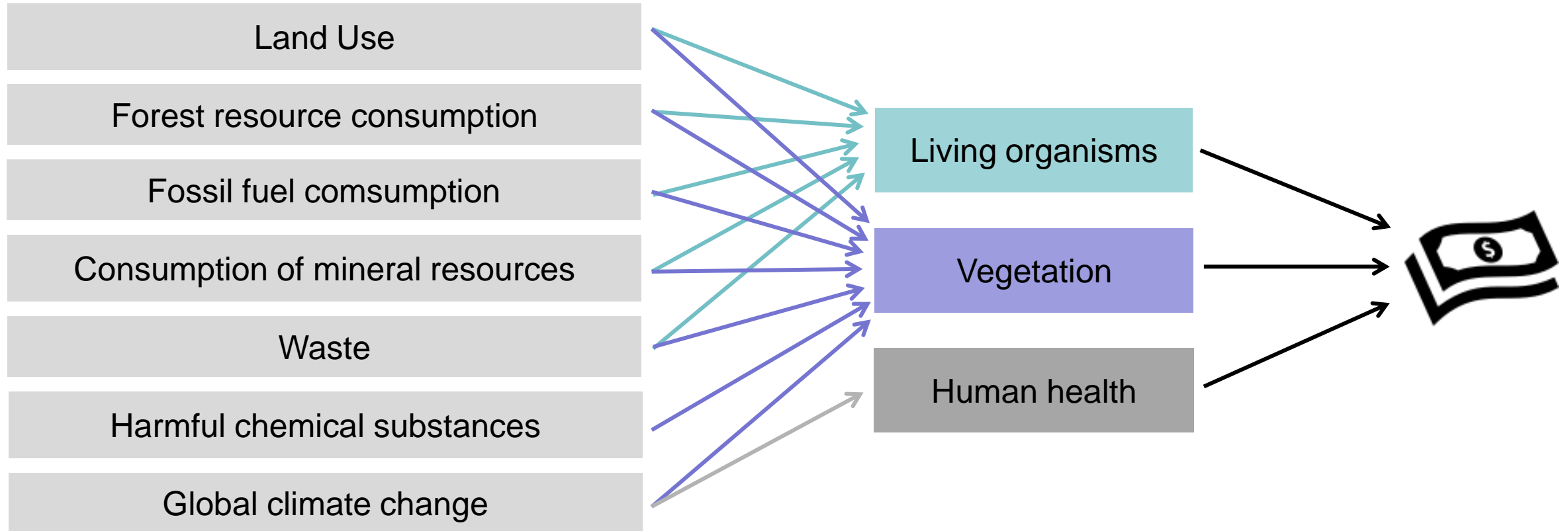


Small difference between technologies



Big difference

Data & Methods



MiLCA Software



Inventory Database for
Environmental Analysis (IDEA)

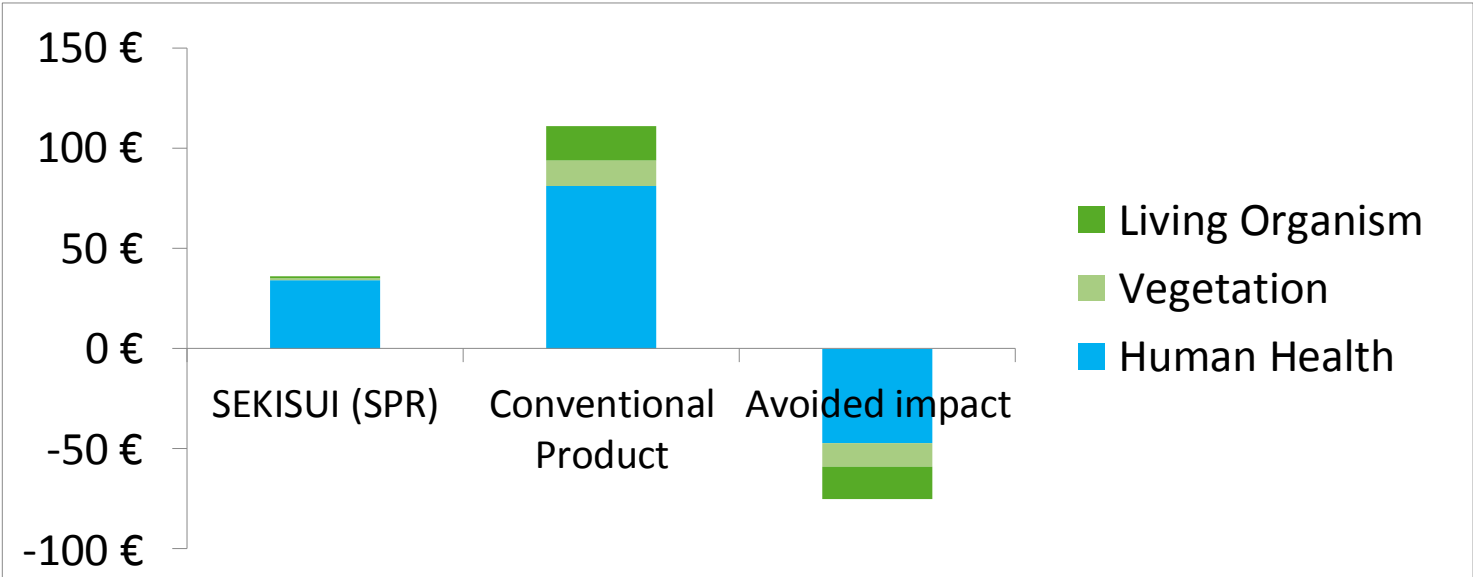


LCIA + NCA-Method (LIME)

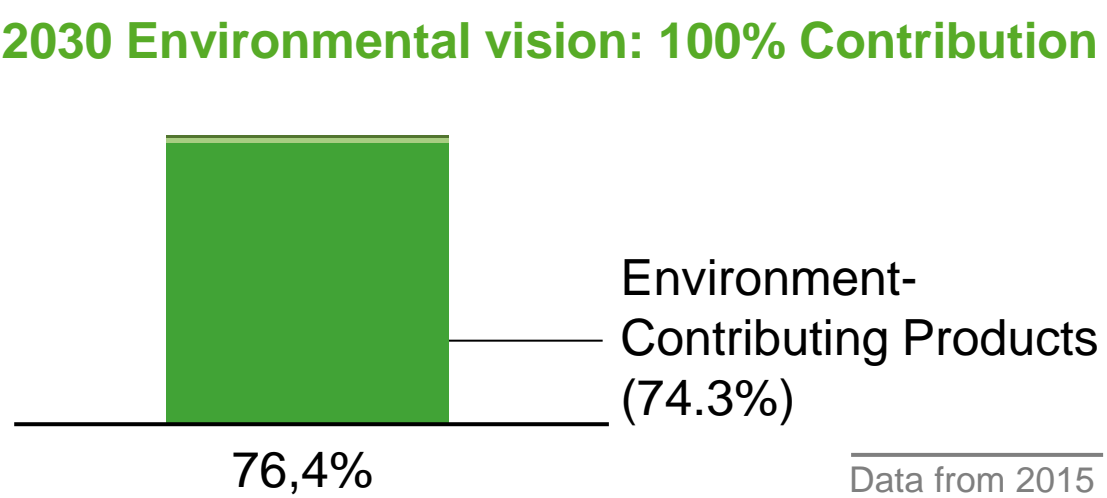
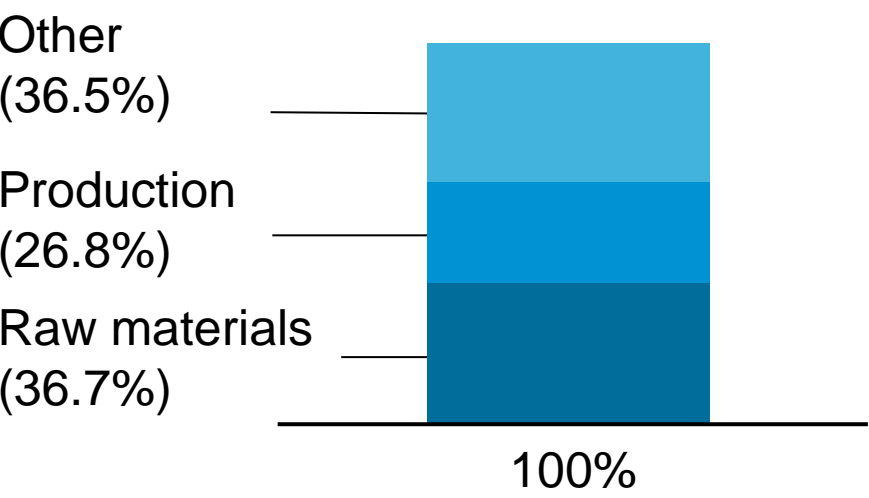
Results



	Materials	Production	Transport	Use	Disposal
SEKISUI product	82 %	<0 %	0 %	18 %	0 %
Conventional product	46 %	2 %	< 0%	47 %	5 %
Avoided impact	29 %	3 %	< 0 %	60 %	7 %



The SEKISUI Index



Internal communication

A decorative horizontal line composed of two rows of small blue dots, fading out towards the right side of the slide.

- Integration in R&D processes
- Discussion in internal meetings with our local Environmental Managers
- Explanation to employees in inhouse literature
- Presentation of results and new progresses during inhouse exhibitions

→ Raise awareness

External communication


- CSR reporting
- Investors' meeting
- Presentation at exhibitions
- Company literature
- Knowledge exchange with Ministries/Government

Transportation	S-LEC™ Sound and Solar Film	S-LEC™ Solar Control Film	S-LEC™ Sound Acoustic Film	Advancell® EM Hollow microspheres
	KYDEX® 6565 Thermoplastic sheets for aviation	FFU® Synthetic railway sleepers	Alveolen® Foamed airducts	Calmmoon Rail web noise shielding
Construction & Infrastructure	SPR™ Trenchless pipe rehabilitation	Eslon Rain gutter systems	Ashera wood Artificial lumber	Crosswave Rainwater storage system
Electronics	Micropearl® AU Conductive micro-particles	Micropearl® SP/GS Conductive micro-particles	Medical Diagnostics	CP3000 Blood coagulation analyzer
Raw Materials	Advasol® Water soluble film			

 Reduction of GHGs

 Waste reduction

 Conservation of raw materials (use of recycled materials, reduced use)

 Semi-finished intermediate material that contributes to the environment

 Water conservation/circulation

 Disaster prevention and mitigation

Questions & Discussion

A decorative horizontal line composed of multiple rows of small blue dots, spanning the width of the slide.

- How can environmental-contributing products be competitive on the market?
- How can environmental efforts of companies (especially in B2B), better be promoted?
- How can environmental efforts of companies (especially in B2B), become a competitive advantage?